



CINETICA NUTRON 4.0

NU.TRON - One system, a thousand possibilities

The NU.TRON is the result of several years of development with a passion for creative and powerful images. It offers weightless and shake-free handheld camera with a payload up to 20kg. The camera remains stable in any position by the sole means of perfect balancing. No use of electronic stabilizers, no motors, no restrictions - only natural movements and intuitive camera work!

The NU.TRON is an operator tool that is easy and intuitive to use. Its potential lies in the exceptional versatility of the camera movement and in the high level of compatibility with numerous camera and mounting systems. The possibilities for unique tracking shots are extensively upgraded in combination with a "FluidHead", a "LambdaFluidHead", a "Steadycam", a "Gimbal", or a remote.

Using the NU.TRON with its huge variety of variations for free tracking shots is beyond comparison. Low to high transitions and classical hero shots can be repeated endlessly with the "weightless" camera until the one perfect shot is achieved. The operator is free of any physical load and can focus solely on the scene. Top shots, whether static or dynamic, are accomplished within seconds whereas the operator is always supported by promoting ergonomic work.

The NU.TRON is the key to dynamic scenes.

Additional advantages are the quick assembly and the compact transport shape of the NU.TRON. It is easily set up by two people in under 10 minutes and it fits in a medium sized car.



2.50 m vertical reach of mount
3.60 above ground in shown setup

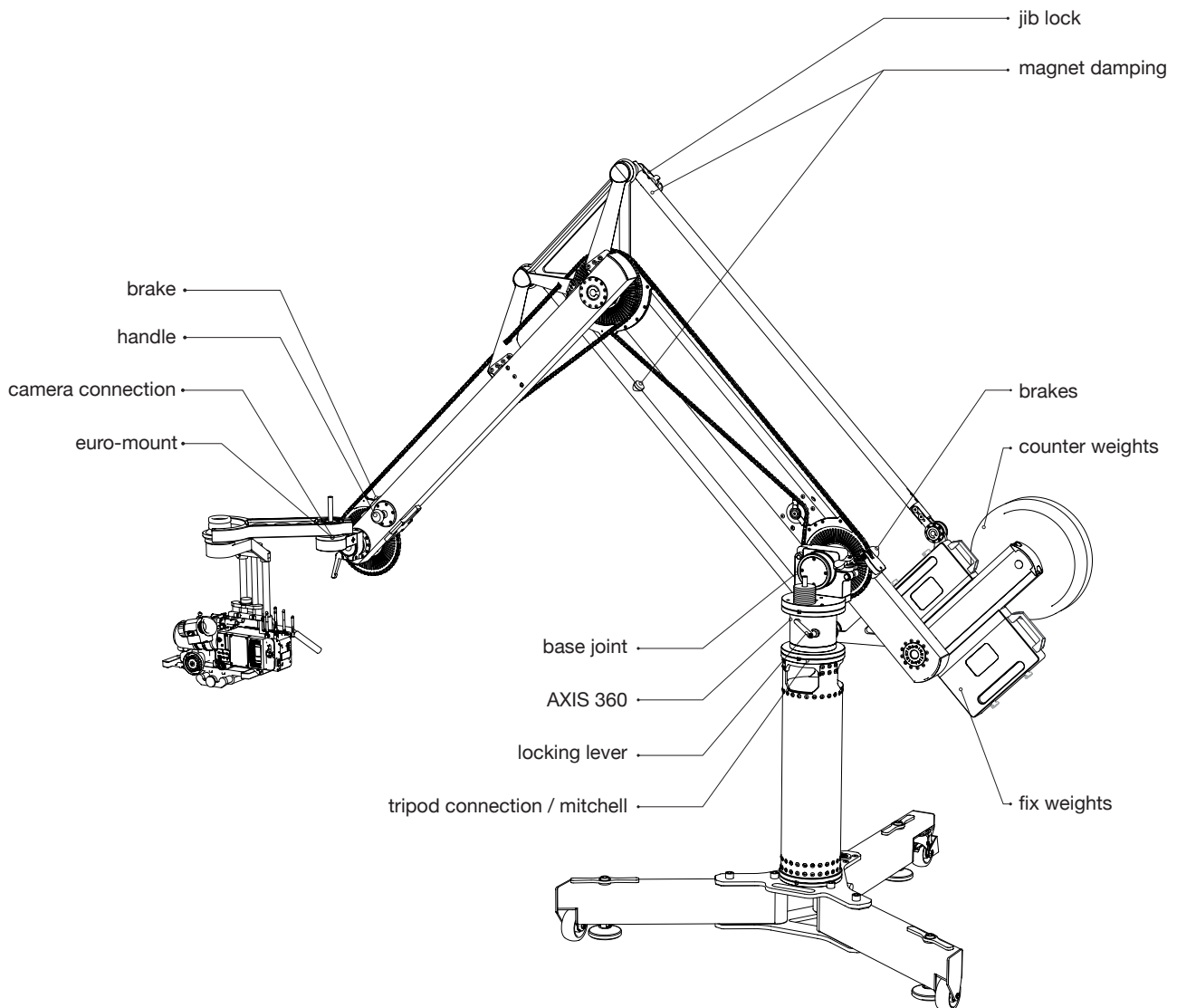


2.50 m horizontal reach
5 m total horizontal reach



Specific Functions

- compact transport shape
- fast equipment assembly and adjustment
- simple and quick change of perspectives
- free and stable tracking shots
- Smooth transition from low to high and vice versa
- hero shots, easier than ever
- vertical tracking shots at any time in any shape
- dynamic top shots up to 3.60m of height
- ergonomic relief, „weightless handheld camera“
- compatibility with other systems (Fluid, Lambda, steadicam and Gimbal)
- high flexibility, agility, speed and efficiency
- enhancement of creativity and improvisation



Technical Specifications

- maximum payload.: 20 kg / 44 lbs
- horizontal range.: 5 m / 16,5 ft
- vertical range: 3.6 m / 12 ft
- net weight: 33.5 kg / 74 lbs
- pack size: 2.1x0.5x0.35 m / 82x20x14 inch
- counter weight max.: 60 kg / 110 lbs
- calibration weight total: 40 kg / 88 lbs
- tripod connection: Flat Base / Mitchell
- camera connection: Euro Mount
- tripod load min.: 300 kg / 660 lbs

